

Forced DPF Regeneration

You can start the forced regeneration on the following models:

Astra-H

- Z19DT, Z19DTH, Z19DTL, Z17DTR, Z17DTJ

Zafira-B

- Z19DT, Z19DTH, Z19DTL, Z17DTR, Z17DTJ

Vectra-C / Signum

- Z19DT, Z19DTH, Z19DTL

Corsa-D

- Z13DTH, Z17DTR

Antara

- 2.0L Diesel engine

Warning

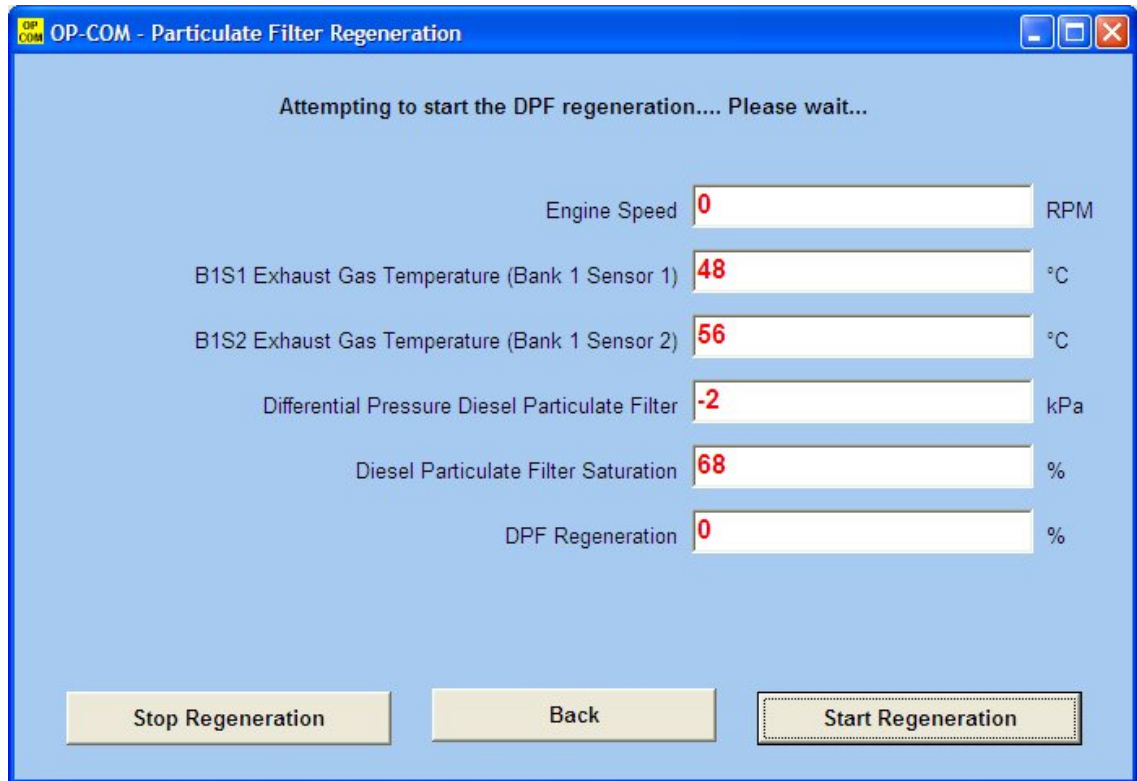
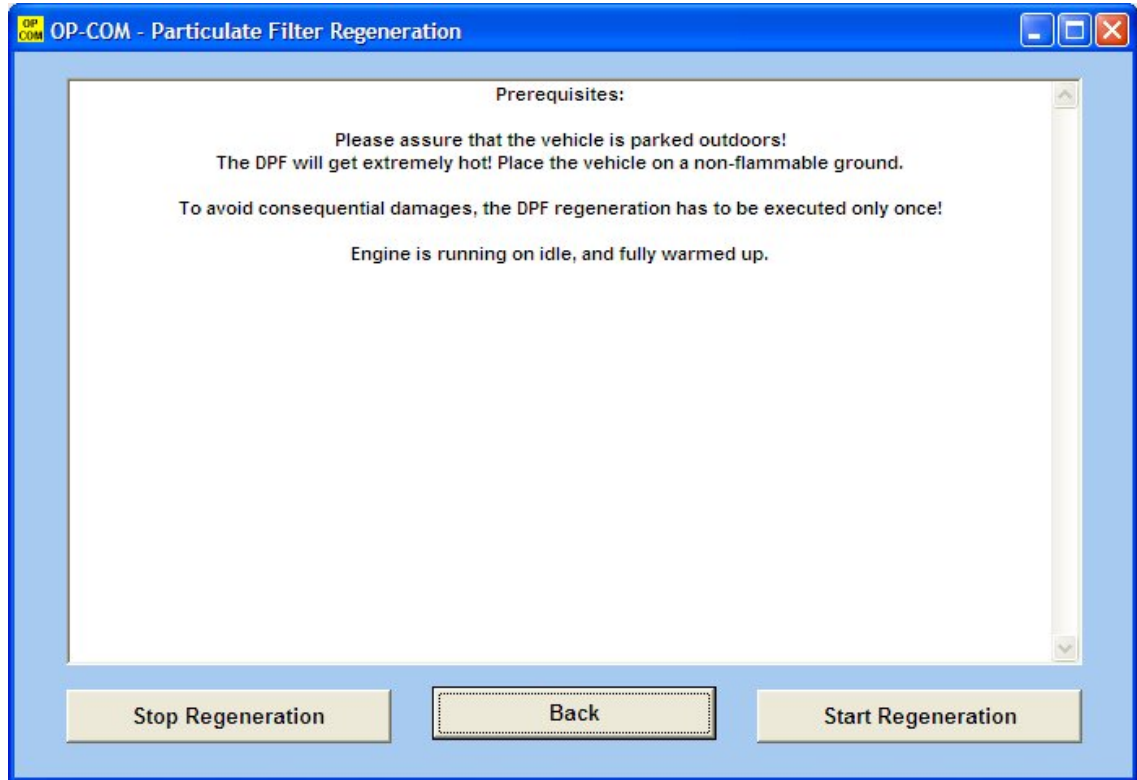
The exhaust gas temperature will increase to over 600 °C, so you must perform this outside, on a non-flammable ground.

The regeneration procedure is completely controlled by the engine control unit.

Prerequisites

- Engine is running at idle
- Engine is fully warmed up
- To avoid consequential damages, the DPF regeneration must be executed only once!

EDC16 System



Note, after "DPF Regeneration" is finished live data "Diesel Particulate Filter Saturation" will show 70%. When engine controller has performed a dynamic regeneration value will be changed.

DECE01 System

The screenshot shows a software window titled "OP-CDM - Output tests - DPF Regeneration". In the top right corner, it displays "Test Status Inactive". The main area contains five rows of data, each with a dropdown menu and a corresponding numerical value in a text box:

- Sensor 1 Exhaust Gas Temperature: 85 °C
- Sensor 2 Exhaust Gas Temperature: 75 °C
- Differential Pressure Diesel Particulate Filter: 0 kPa
- DPF Regeneration: 0 %
- DPF Regeneration Status (Diesel Particulate Filter): Inactive

Below these rows are two empty text boxes. Underneath them is a section labeled "Detailed information on the output test:" followed by a large empty text area. At the bottom of the window are three buttons: "Back", "Stop activation", and "Start activation".