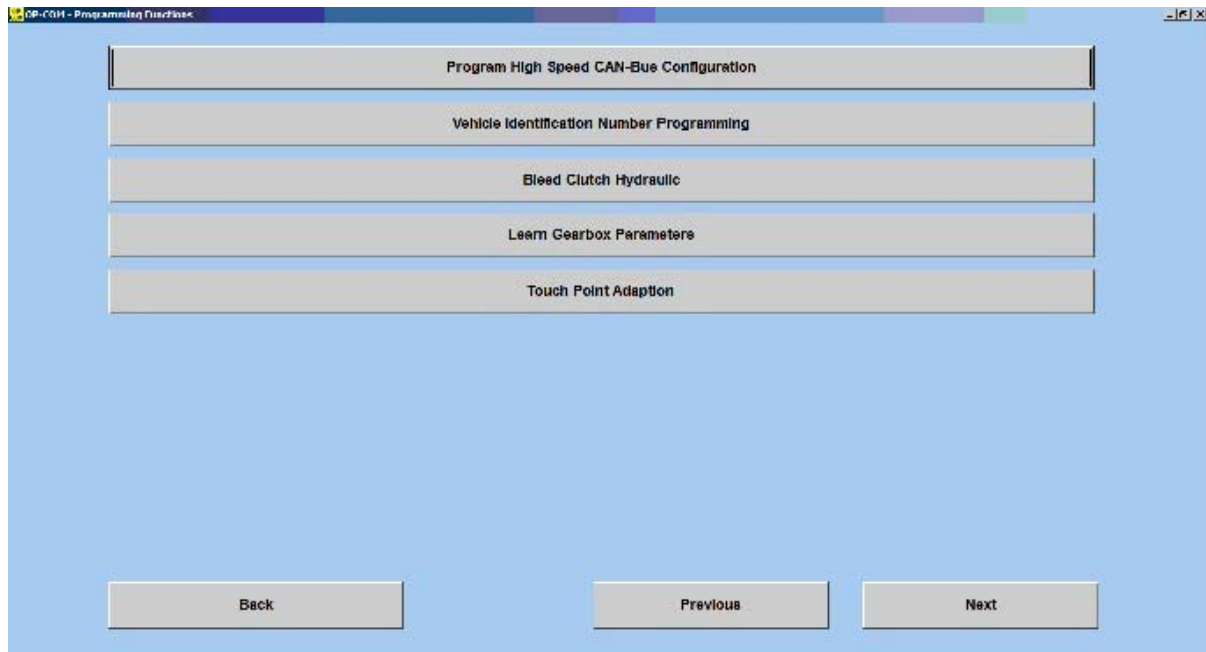


## Adjusting the clutch and gear adaptation Easytronic

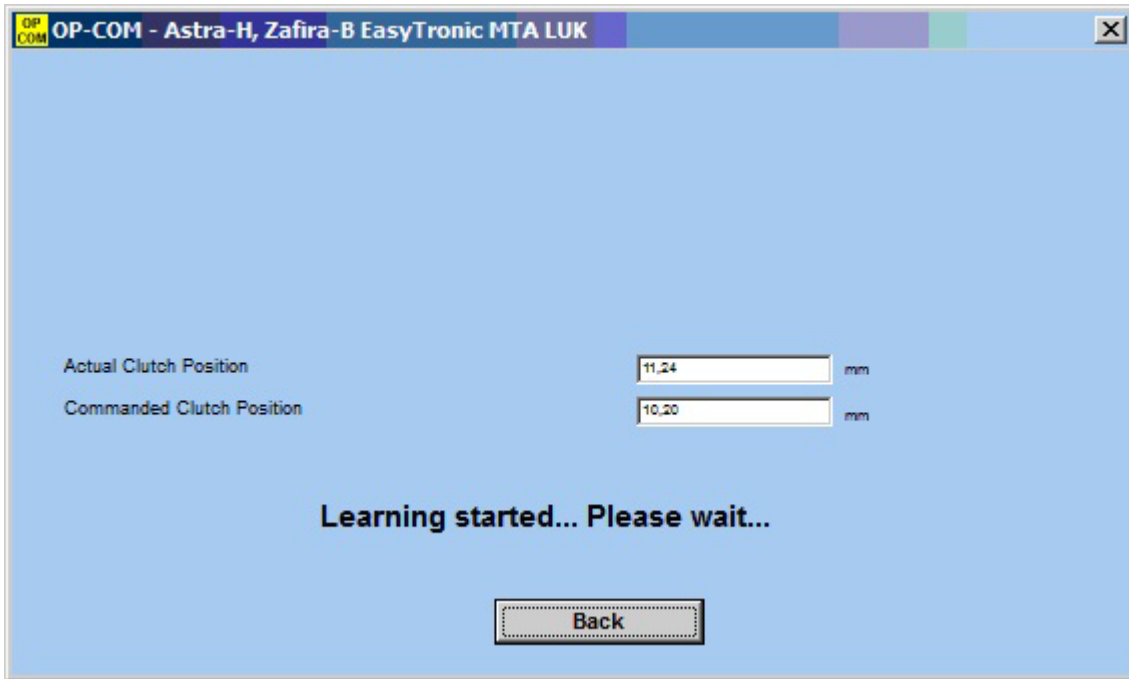
For normal operation the Easytronic gearbox must periodically have maintenance work on adjusting the point of setting for the clutch and gear box adaptation.

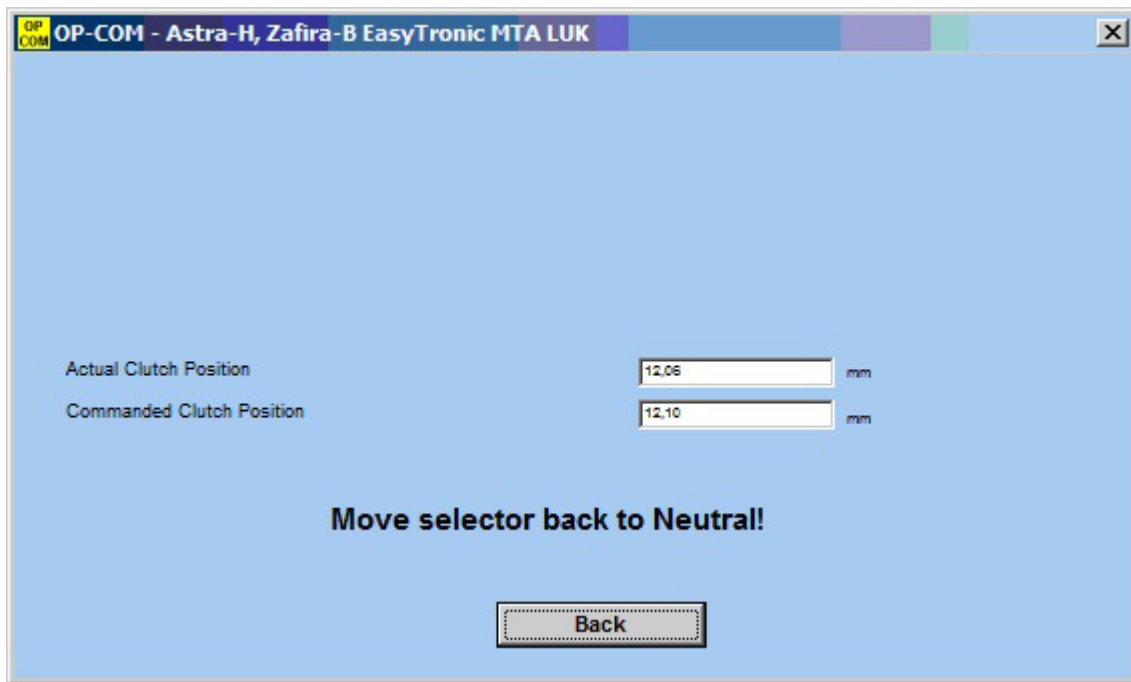
Diagnostics> Vehicle Type> Transmission> MTA Easytronic  
Next select Programming and the following menu will appear.



### **Adaptation point setting (Touch Point Adaption)**

1. Engine on and box in neutral position. Select Touch Point Adaption
2. Follow the instructions that appear on the screen and observe the process of adaptation.





In the process of training the values are synchronously changed from larger to smaller and vice versa

After the process has finished it will say settings stored, Programming done!

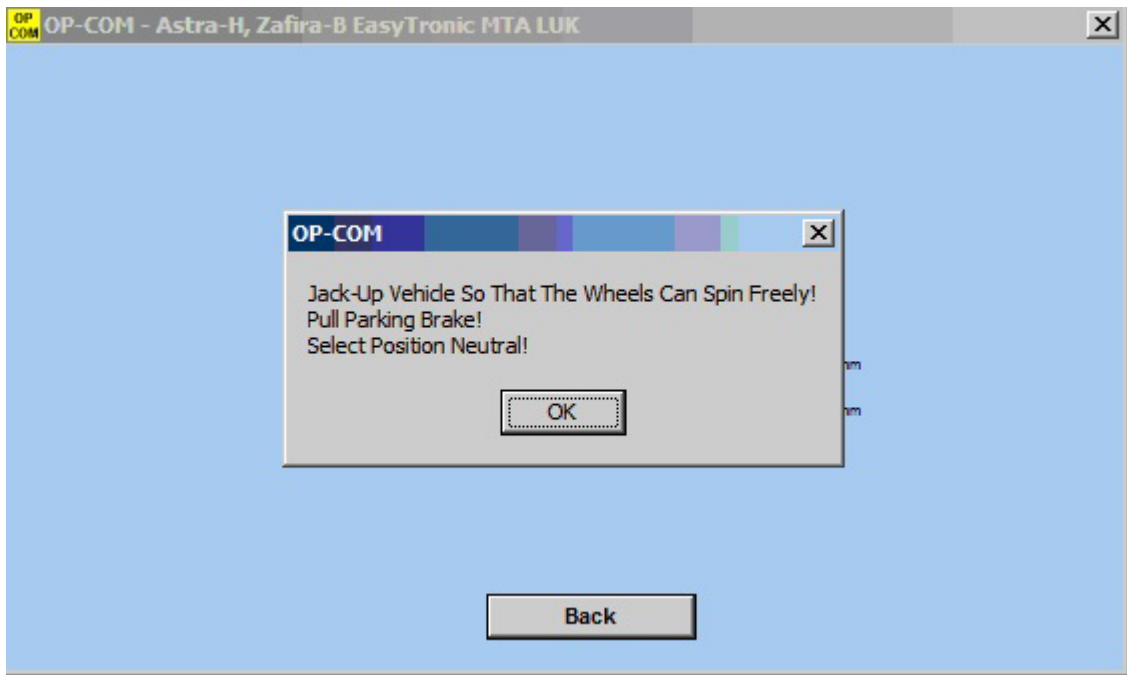
At the beginning of the process, you may receive the following Message: Conditions not correct!

You need to exit from the controller and from the program, Stop and restart the car, Re-enter the controller and repeat the process.

## Learning Gearbox Parameters

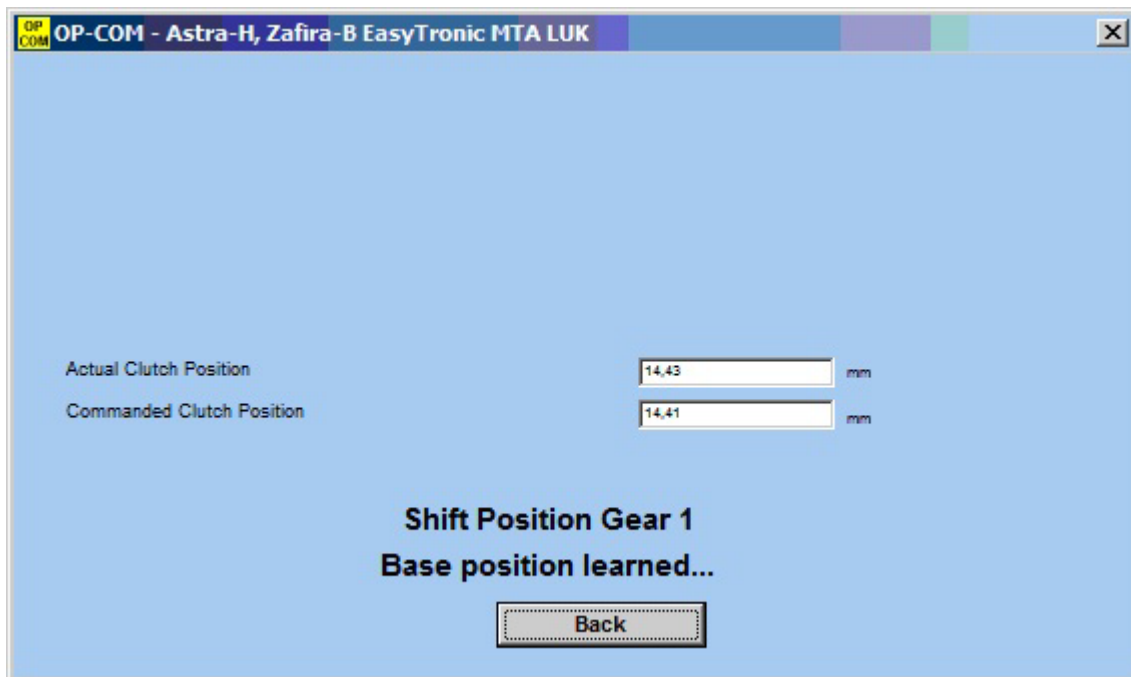
1. For this procedure is you need to jack up the front wheels of the car so that they can rotate freely.

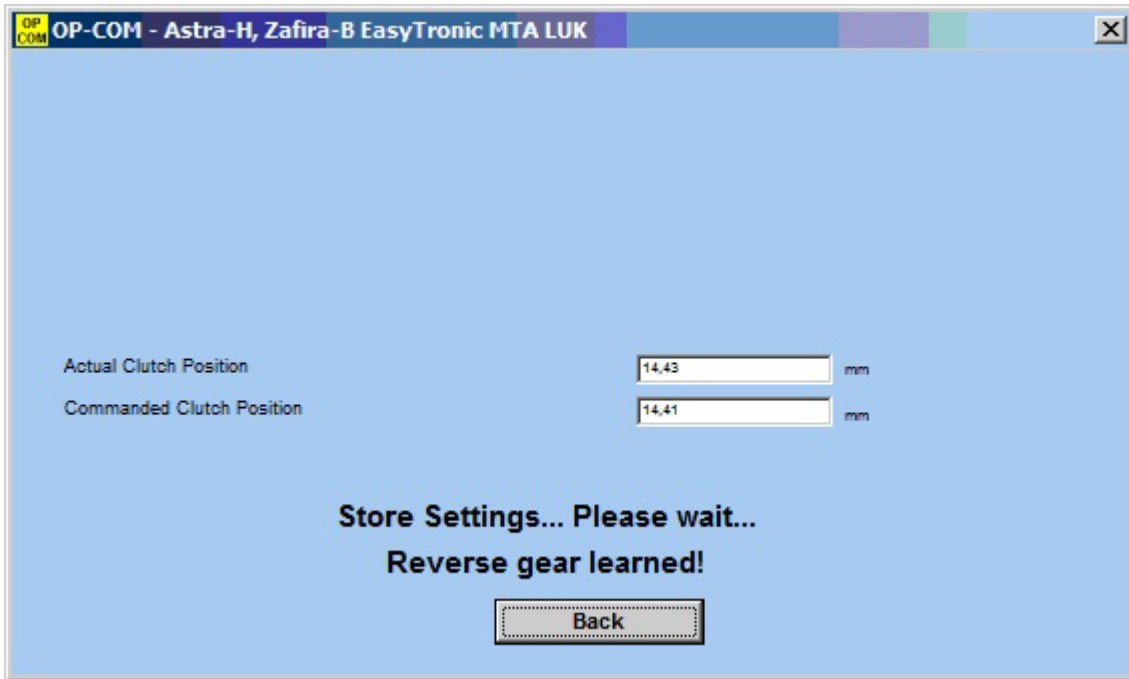
2. Turn the ignition but don't start the engine until prompted. Select neutral with the handbrake on.



Confirm the choice by pressing OK.

The first phase will learn the gear positions 1<sup>st</sup> to 5<sup>th</sup>.

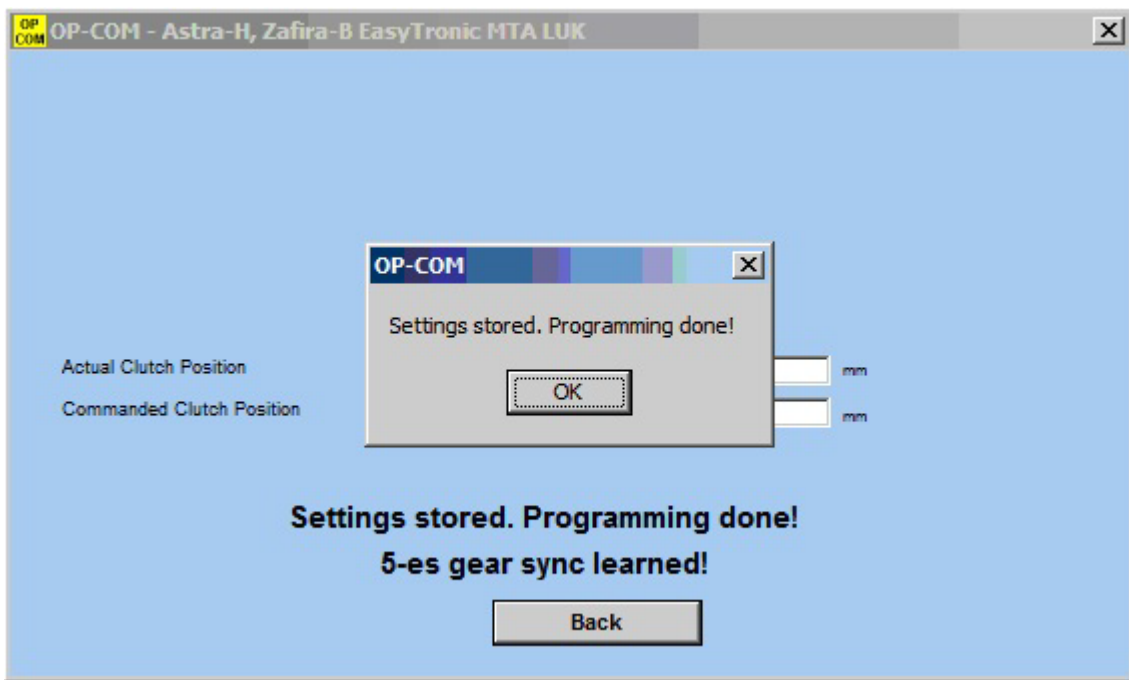




After the first part is complete, Push the brake pedal and start the engine, then click OK



Second phase will synchronize the gear positions.



Once the process has completed lower the vehicle to the ground and test drive.

